

# LEIGHTON - LINSLADE CROQUET CLUB

Founded 2000

Contact - 01525 373 860

March 2003

NEWSLETTER

Volume 4 No.2

Greetings! A bit early for swallows but the season fast approaches.

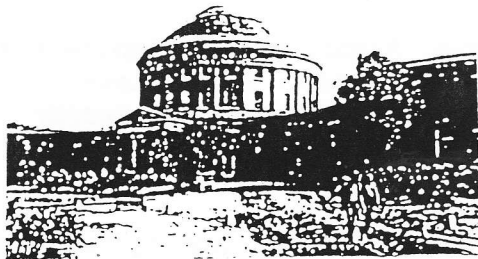
Your new Committee met on February 27th and arranged the following programme for our fourth season.

OFFICIAL LAUNCH, to which current and potential members are invited, is to be on **SUNDAY 13th APRIL**, 2.30 - 5.00 p.m. We hope the Mayor will be there to "strike the first ball" and to join us for tea and cake.



## OTHER ITEMS FOR YOUR DIARY

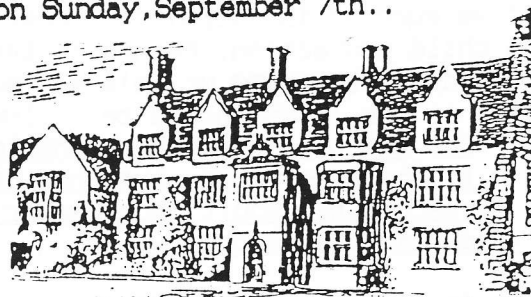
- 1) A 'Come and Try' session, aimed at recruiting new members, to be held on Sunday, 11th May, 2.30 - 5.00 p.m. Fee £2, to include light refreshments - offers to help with which will be gratefully received by Audrey Bunn. Accompanied children free.
- 2) A return 'home' match against our friends from Stony-Stratford to be arranged one Wed. or Thurs. morning.
- 3) An 'away' match against Dunstable U3A, probably on July 19th.
- 4) We expect to enter a team in the 'Grass Roots' tournament. Heats are usually held in June.
- 5) E. Anglian Croquet Federation/National-Trust tournaments. Doubles to take place at Anglesey Abbey on Saturday, July 12th. The singles will be held at Ickworth Hall on Sunday, September 7th..



ICKWORTH

- 6) NEW VENTURE! We are entering a team of four, to be decided by play-offs if necessary, in the All-England Golf-Croquet Handicap. The area heats take place on August 18/19th with the finals held at Wrest Park in September., should any of our players reach that stage - and why not????

Audrey Bunn (372083) has nobly agreed, once again, to be our fixtures secretary.



ANGLESEY

- 7) We shall probably be asked to take part in the May Fayre celebrations - an opportunity to sell our sport.

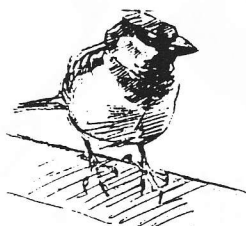
A busy summer ahead !!



MEMBERSHIP All the above will, of course, depend on the Club having its usual active membership. So far only 7 people have re-joined! Do send in your fee (£45) payable to LL Croquet Club, to your secretary at 40, Miles Ave. LU7 3LG soon please.

The leaflets enclosed with this newsletter are to help you to recruit some new members so that the Club continues to develop. If you need more or can think of other possible contact points please contact Margaret on 373860.

#### NEWS OF MEMBERS



This little bird told me that JOAN SLOW is home and feeling a lot better. JEAN FLOYD is also improved but awaits a leg operation. MARGARET B. has one good arm and hopes to have the other one in action for (gentle) games by April. RICHARD KEIGHLEY is to attend the E. Anglian Federation conference and AGM on our behalf on March 16th. Report later.

TREASURER'S NEWS Len tells us that we begin the season with a bit of money in the bank but the Committee agreed that we should apply for a Sport's Council grant to purchase some more stacking chairs so that we can accommodate our visitors and spectators. The raffle at the AGM raised £63.20. Thanks to Tony Brown and to all who contributed prizes. Len has completed his research into possible alternative venues for the Club and feels that, even with the problems of vandals etc., Page's Park is our best option at present.

GOLF CROQUET COURSES 1) A course to prepare people to coach beginners is to be held at Edgbaston on 12/13th April. If interested ring 373860 for info. as soon as possible as places will be limited.

2) Bill Arliss of the Croquet Assoc. would organise a g.c. REFEREES course for 6 or more people at a locality to suit. George Lawson is keen to qualify, perhaps we could find some more folk from ours and nearby clubs?

#### \* CHILD PROTECTION / INSURANCE \*

We have received advice on the matter from the Croquet Assoc. and it is clear if we succeed in recruiting under 18's, we shall have to adopt a formal policy on child protection. Meanwhile the Committee have agreed that the following procedure regarding un-related, non-member children wishing to try out the game on our lawns should be followed.

For the present, members should only introduce such youngsters to the game in the presence of a parent or other nominated responsible adult. Non-member children are not covered under our insurance policy.

Here's to our new season - see you there on April 13th.!



CONTRIBUTIONS - poems, drawings, jokes, thoughts, articles, suggestions, reports of activities etc.. - to the editor (373860)? now? or in time for the May edition.